

ZOOMLION CONCRETE MIXER



ZOOMLION

Zoomlion Heavy Industry Science & Technology Co.,Ltd.

Tel: 0086(731)-88997340 / 0086(731)-88928271

Address: Zoomlion Science Park, Yinpen South Road 361, Changsha City, Hunan Province, China

Official Website: en.zoomlion.com



en.zoomlion.com



[zoomliontech](#)



[zoomliontech](#)



[zoomlion](#)



[zoomliontech](#)



[ZOOMLION Tech](#)

VISION CREATES FUTURE

ZOOMLION

7.5JB-R



PRODUCT CONFIGURATION



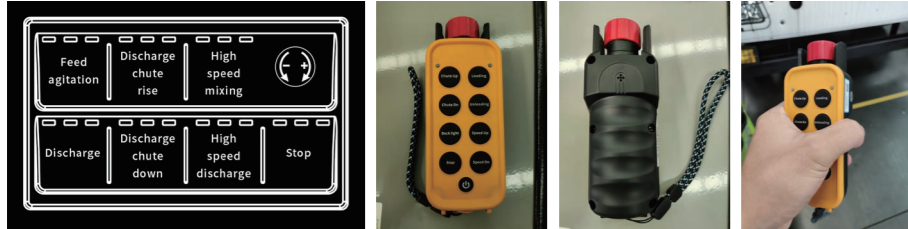
STANDARD CONFIGURATION

- Barrel with 6mm dished end 6mm
- Frame including, chute rack, swivel chute, feed chute
- All-in-one hydraulic oil tank and cooler
- Standard Gearbox, pump and motor
- Ally sliding Ladder and platform
- Single rear step and grab handle drivers side
- LED work light and tail lights
- Plastic guards (Rear only)
- 2 x steel frame poly lined extension chutes, 1 x ½ steel framed poly lined placement chute
- Remote controls with transit mode
- Steel trunnion rollers with side mounted safety guards
- Water meter and slump gauge
- Double acting hydraulic ram
- 250L pressurised water system
- Painted in polyurethane paint – one colour barrel - one colour frame NO company LOGO
- Removable inlet bridge

OPTIONAL EXTRAS

- Running board style guards
- 2nd Barrel colour – Company Logo and livery
- No ladder or Platform
- Reverse camera
- Clear coat on barrel
- Single step both sides
- Double step both sides
- Triple step both sides
- Full Placement chute
- Ally framed chutes poly lined
- Full ally chutes
- Full diff Mudflaps
- Spray suppressant' s
- Side intrusion
- Swivel – feed chute Vibrator
- Chute raise and lower switch at rear

PRODUCT HIGHLIGHTS



2.Remote control:
1) High speed mixing/discharge.
2) Barrel can maintain a constant speed, can be controlled by remote.



5.Digital water meter:Displays the amount of water added each time, and can be automatically reset.



6.Vibrators: Vibrators mounted on the chute and the outlet to ensure the concrete dumping effectively.



3.Super large water tank



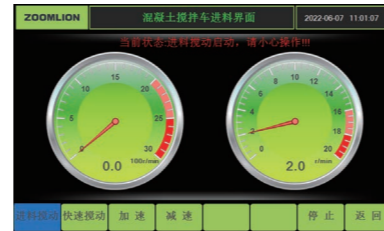
4.Spring loaded switch for water charging.



7.Emergence stop buttons: Four Emergence Stop buttons applied and covered by protections.



8.Hydraulic Chute Ram with Built-in Safety Valve (control by remote) .

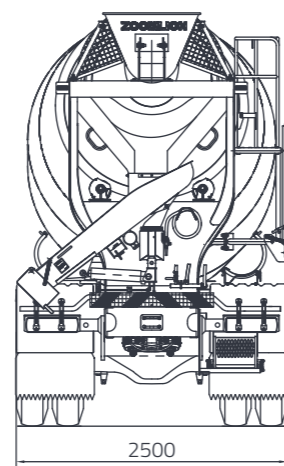
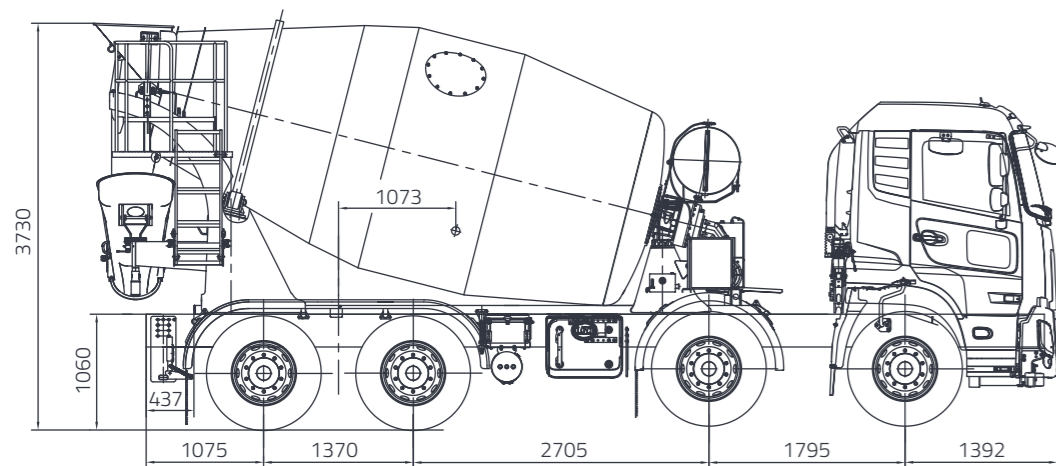
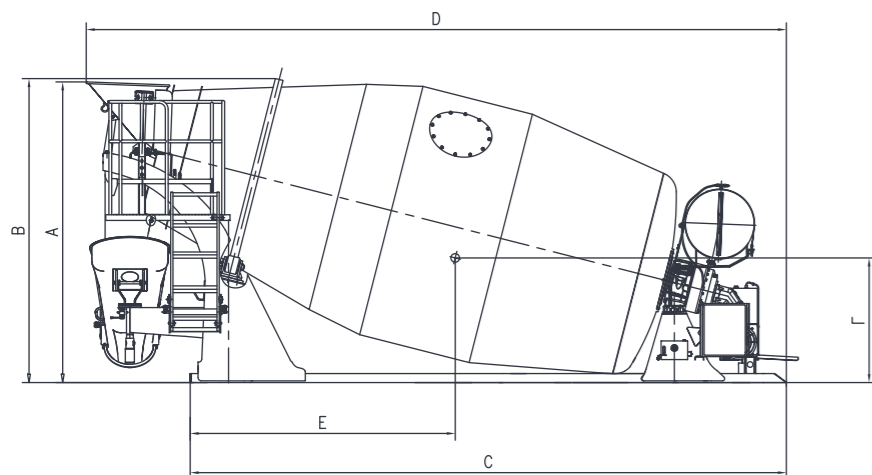


1.Mic (mixer truck Intelligent constant speed control system): Mic system can save more than 6.6% fuel.



CONCRETE MIXER SPECIFICATIONS

UNIT: mm



Truck Solution

Mixing Capacity	7.5
Power Unit Hydraulic Standard	PTO
Chassis Brand	Sinotruk/UD/Isuzu/etc
Model	8*4

General

Barrel (Front)	4mm	Q355B
Barrel Middle	4mm	Q355B
Barrel (End)	4mm	Q355B
Dished End	6mm	Q355B
Mix Blades	3mm	B520JJ
T Type fins	4mm	B520JJ
Rear "A" Frame	5mm	Q355B
Front Pedestal	5mm	Q355B
Swivel Chute	3mm +4mm	Q355B+B520JJ
Loading Hopper	3mm+2mm	Q355B+B520JJ
Chutes	3mm	Plastic
Chassis Rails	80 x 80 x 5mm	
Chute Jack	Hydraulic	
Chute Rack	3	
Guards	5mm Plastic Guards	
Ladder & Platform	Slide with large platform	
Manholes	One large circular manhole for easy access	
Bowl Guard	Two side guard	
Gearbox flange ring	6 × φ 13EQS, M12	
Bowl Angle	14.3 degrees	
Trunion Ring	Machined to achieve smooth operation φ 1760	

SANDBLASTING & PAINTING

Sandblasting	Class 2.5 and contaminants removed
Undercoat	2 Pak epoxy primer
Painting	2 Pak top coat polyurethane

HYDRAULICS

Reducer	ZF P4300
Pump	Rexroth A10VGT071EP4P0
Motor	Rexroth A2FMT080
Jack Shaft	HDHXYG-300

MISCELLANEOUS

Water Tank	Pressurized 250 Lt aluminium
Water Gun	Rear flush system with water gun
Water Meter	Provided
Controls	Driving cab control, remote control, wired control
Rollers	Left and right
Wiring Lights & Mudflaps	Provided
Slump Meter	Optional
Weight Scale	Optional
Trunion Rollers	45 steel
Controls (STD)	(Optional Electronic or Remote)
Chute Lock (STD)	Lock & Pin or Brake Shoe
Mudguards	Plastic or Aluminium
Water Meter	Provide
100mm Slump Gauge	Provide
Flip Over Hopper	Provide
Hydraulic Chute Ram with Built-in Safety Valve	Provide

FACTORY HIGHLIGHTS



1.Barrel automatic production line.



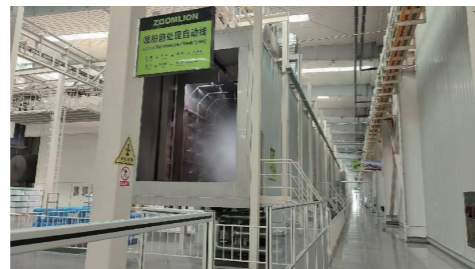
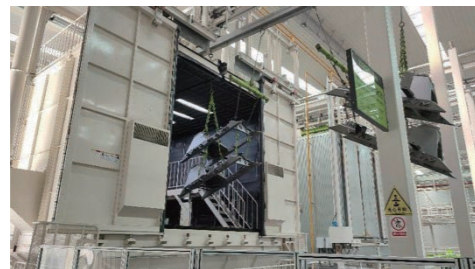
2.Blade pressing line.

Using 2D and 3D laser holographic scanning technology, each blade is 100% automatically inspected, all inspection data are automatically uploaded to the quality control system, and the quality can be traced for lifetime.



3.Intelligent coating production line.

Aerial heavy accumulation and release chain automatic transportation, 3D laser scanning to automatically generate workpiece models, infrared gas radiation baking, reciprocating machine + robot powder spraying combination, environmentally friendly powder spraying process environment greening, MES system



Electrostatic powder spraying, two-coating and two-baking process. We achieve higher adhesion and higher wear resistance through decomposition spraying, 3D laser scanning robot spraying process, adapt to different product series, flexible production, workpiece surface adhesion, aging resistance and surface hardness are greatly improved, reaching the industry top Level.



SERVICE SYSTEMS



Localization

Local service team provides high-valued repairs and maintenance service, and technical support as and when required.
Local stock of a wide range of service exchange parts.
Fastest responds on service & spare parts.

Customization

Customized colour painting.
Optional configurations.
Customized service solution and extended warranty package.

Training & delivery

Operation and maintenance training when delivery.
Pre-delivery inspection.
Annual inspection.

